



skills for industry, from industry

CAPABILITY STATEMENT



integralskills.com.au

SKILLED FOR SUCCESS



Integral Skills was born from a passion for providing high-quality training and assessment services. As a Registered Training Organisation (RTO ID 45528) that's 100% Australian-owned and operated, we live and breathe a 'skills for industry from industry' approach.

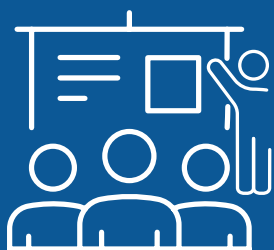
With dedicated training facilities in Orange, Mudgee, and a satellite facility in West Wyalong, we bridge the gap between the classroom and the worksite, to get your workforce job-ready.

We leverage a team of professional and passionate trainers and assessors who have more than 100 years of experience in their chosen fields. When they're not training, you'll find them on the worksite honing their skills and knowledge ready to incorporate this into their training delivery.

Driven by a sense of duty to keep the community safe and look after the most precious asset, our people, we equip yours with the knowledge and skills necessary to perform their jobs safely and productively, so they return home to family and loved ones every single day.

You can be assured that the training and advice provided comply with the latest government legislation, standards and industry best practices.

We're proud to have delivered training and assessment services for more than 10 years across NSW and WA locations and on our clients' sites, with thousands of happy learners certified along the way including being a winner in the Orange business awards for excellence.



>2,011
**TRAINING SESSIONS
DELIVERED**

90+
**TRAINING COURSES
OFFERED**

>18,300
**COURSE
PARTICIPANTS**



115+
**COMPANIES
TRAINED**



TRAINING FIT FOR THE REAL WORLD

At Integral Skills, we're serious about training, and our commitment to safety never stops. We provide training and assessment services for high-risk industries where there's no room for error and the job must be done right the first time. From the coalface to crib rooms and maintenance sheds to major infrastructure works, we realise the vital role training and upskilling play in preparing and protecting workers for every situation.

Our trainers and assessors are not only keen practitioners of professional knowledge conveyance, but specialists in their respective fields, ensuring you're job-ready and confident to hit the ground running. Whether you're looking for new skills to advance your career, upskilling your workforce, or maintaining competency and currency ready for the next project, we're here to help.



CERTIFIED PROTECTION

As the job demands of the modern worksite evolve, so do the training services we offer. Regardless of whether it's at one of our training facilities or on the clients' site, our robust educational platform is designed to service the specific needs of your workforce. We're renowned for facilitating customised certified training courses and workshops, providing high-risk work licence training, assessments, and packages for specific site and workforce needs.

We understand the diverse environments we work in and how quickly situations can change. That's why we cater to individuals based on a broad set of criteria, including prior learning, skills and education levels, learning styles, cultural requirements, as well as geographical and resource restraints.

Our clients can be assured they receive the highest quality training backed by in-house SafeWork accredited assessors and WHS personnel. Every course we deliver undergoes strict quality assurance checks ensuring it's fit-for-purpose and incorporates the most up-to-date work practices, equipment and safety initiatives.



COURSES DESIGNED FOR INDUSTRY, FROM INDUSTRY

No matter the job, your people will experience training differently. Industry-derived facilitators will instill the confidence participants need to perform their duties safely and competently. We offer a wide range and combination of courses to suit all needs and skill levels, all of which are delivered to the latest units of competency.

Check out a sample of our most popular courses at the end of this document, or visit www.integralskills.com.au for a detailed course list. For more detailed course information, email admin@integralskills.com.au or call +61 2 6362 2502. We'd love to hear from you!



VALUE TO YOUR BUSINESS

Like everything done at Integral Skills, our team go above and beyond to exceed customer expectations. Aside from a range of dedicated training services, we take pride in delivering value to the businesses we serve.

REFRESHER COURSES

Like many skills, workers are often required to refresh or update units of competency periodically to keep up-to-date with job advancements or changes in legislation, site requirements, and safety standards. Although confined space and working at heights are our most requested refresher courses, we can customise a refresher course for any of the courses we deliver to ensure your employees are always job-ready.

VERIFICATION OF COMPETENCY

Verification of Competency (VOC) is a method of assessment that validates the skills, knowledge and competence of the individual. This assists workplaces in meeting WHS and insurance requirements, ensuring regulatory compliance and the safety of your people.

Integral Skills' VOC service is undertaken at one of our training facilities or on a customer site, using our documentation or yours. Our highly experienced assessors are experts in their field. They hold all relevant qualifications and work alongside businesses to ensure their people's skills are tested, refined and updated based on their specific jobs.

EQUIPMENT TAGGING & SALES

Safe and compliant gear is critical when working at heights or performing lifting activities. Integral Skills manages the inspection, tagging, registration, and supply of height safety and lifting equipment. Following inspection and tagging, all equipment is recorded on a register according to the relevant Australian Standards.

As part of a comprehensive tagging service, our qualified inspectors periodically inspect and tag equipment with specific colour codes. Each product is added to an online register, and information, including equipment description, serial number, and inspection status, is provided to the customer.

Tagging and visual inspections are conducted according to AS 3775 Chain slings, AS 1666 Wire Rope Slings, AS 1353.2-1997 Flat synthetic-webbing slings, AS 4497 Roundslings – Synthetic fibre, and AS/NZS 1891 Industrial fall-arrest systems and devices.

We're also distributors for various market-leading industrial safety equipment brands. This means we can manage product replacements as required at market leading competitive rates. Our inspectors assess the condition of your equipment and make recommendations on when items need to be replaced, while also assessing the work environment and industrial applications.

PALLET RACKING INSPECTIONS

In any warehouse or industrial facility, WHS legislation dictates that the design and layout of pallet racking systems must suit the size, shape and weight of the products being stored. Pallet racking safety inspections are also a SafeWork requirement, and inspections must be conducted at least every 12 months to ensure compliance with AS 4084-2023 pallet racking standards.

Integral Skills' safety inspectors are qualified to conduct pallet racking inspections and provide a comprehensive report on any damage or non-compliance issues.

SAFETY & TRAINING PROFESSIONAL SERVICES

At Integral Skills, our professional services are an extension beyond our suite of training courses. From services such as onsite audits, risk assessments, procedural development or reviews, and Training Needs Analysis (TNA), to comprehensive reports with recommendations, we help keep your worksite safe, productive and compliant.

These services serve to strengthen collaboration between employees and contractors on the ground, ensuring all parties adhere to site rules and regulations, safe work procedures and certifications.



WHAT OUR CLIENTS SAY



"We use Integral Skills to keep our competencies up-to-date and further our knowledge and skills in the industry. We appreciate being able to use a great local branch for all our training needs."

— Mudgee Cranes



"We receive amazing customer service through Jess,. She goes above and beyond to help accommodate our requirements. Nothing is ever a problem and it always gets sorted."

— Double R – Mudgee Branch



At Hot Engineering, we are constantly looking to upskill and train our workforce. Integral Skills answers our call-out for all of our training needs. They are local, reliable, and professional, and every query is always answered in a friendly and informative manner. We love supporting this local business and are grateful for the years of training they have provided us so far and the quality of knowledge our team receives. Thanks Integral Skills!

— Hot Engineering



Integral skills have been wonderful in helping to upskill our staff. Our employees have reported that the content was just right and easy to understand. They learnt things they would use out in the field. The admin team has also been wonderful, nothing is ever a bother. We will continue to support Integral Skills.

— Strait Up Cranes & Rigging



As Program Coach with the Opportunity Pathways Program since August 2022, I have had contact with the team at Integral Skills to enrol my clients into various high-risk work licences and nationally accredited training courses. Every interaction with the admin and training staff has been positive, from phone calls and emails to face-to-face meetings. The staff follow up on any of my enquiries or issues promptly and professionally.

The training is crucial for our clients to obtain employment and in many cases, life changing. Clients advise that the trainers have been professional and helpful, and the course content and assessments were practical and appropriate to their skill development. The Integral Skills team is always efficient, and I know that each time I contact them the customer service provided to myself and our clients will be excellent.

— Robyn Isbester – Opportunity Pathways Program Coach, Plus Community



The Integral Skills website is easy to use, the admin staff are super helpful and polite, and everything is just straightforward. Our team members always come back to work with no complaints about their training!

— Whittaker Contracting

We are very happy with Integral Skills as a training provider for our employees' high-risk work licensing. They are a local business and their website is always up-to-date, which makes bookings easy and quick to complete. Notifications with training details are also sent directly to our employees. They receive excellent hands-on training. A wonderful all-round service.

— PJJ Group

CONTACT

Looking for detailed course information and session availability? Please contact the Integral Skills office to explore our availability and book today!

HEAD OFFICE & TRAINING FACILITY

🏠 49 Leewood Drive, Orange NSW 2800
☎ +61 2 6362 2502
✉ admin@integralskills.com.au

MUDGEE TRAINING FACILITY

🏠 87 Lions Drive, Mudgee NSW 2850
☎ +61 2 6372 0183
✉ mudgee@integralskills.com.au



SAMPLE SELECTION OF COURSES

Course	Duration
Forklift – LF (HRWL) » TLILIC0003 Licence to operate forklift truck	3 Days
Dogging – DG (HRWL) » CPCCLDG3001 Licence to perform dogging	5 Days
EWP Boom and Scissor Lift – WP (HRWL) » TLILIC0005 Licence to operate a boom-type elevating work platform (boom length 11 meters or more) » CPCCCM3001 Operate elevated work platforms up to 11 metres » RIIHAN301E Operate elevating work platform	3 Days
Confined Space » RIIWHS202E Enter and work in confined spaces	1 Day
Confined Space and GTA » RIIWHS202E Enter and work in confined spaces » MSMWHS217 Gas test atmospheres » MSMPER200 Work in accordance with an issued permit	1 Day
Work at Heights » RIIWHS204E Work Safely at Heights	1 Day
Combined – Confined Space and Work at Heights: » RIIWHS202E Enter and work in confined spaces » MSMWHS217 Gas test atmospheres » MSMPER200 Work in accordance with an issued permit » RIIWHS204E Work safely at height » RIIRIS201E Conduct local risk control	1 Day
Refresher – Confined Space » RIIWHS202E Enter and work in confined spaces	2hrs Approx

Course	Duration
Refresher – Work at Heights » RIIWHS204E Work Safely at Heights	2hrs Approx
EWP Under 11 metres » CPCCCM3001 Operate elevated work platforms up to 11 metres » RIIHAN301E Operate elevating work platform	1 Days
Cutting & Welding at Mines & Petroleum Sites	1 Days
Low Voltage Rescue and CPR » UETDTRRF06 Perform rescue from a live LV panel » HLTAID009 Perform cardiopulmonary resuscitation » UETDREL006 Work safely in the vicinity of live electrical apparatus as a non-electrical worker (granted via RPL)	1 Day
Construction Induction - White Card » CPCWHS1001 Prepare to work safely in the construction industry	1 Day
Risk Management – S1 » RIIRIS301E Apply risk management processes	1 Day
Conduct Safety Investigations – S2 » RIIWHS301E Conduct safety and health investigations	1 Day
Communicate information – S3 » RIICOM301E Communicate information	1 Day
Supervisor Course – S1, S2, S3 » RIIRIS301E Apply risk management processes » RIIWHS301E Conduct safety and health investigations » RIICOM301E Communicate information	3 Days
Gantry and Overhead Crane – Non - High Risk Work Licence » RIIHAN305D Operate gantry or overhead crane	0.5 Day
Bridge and Gantry crane – CB (HRWL) » TLILIC0016 Licence to operate a bridge and gantry crane » RIIHAN305D Operate gantry or overhead crane	4 Days

Course	Duration
Vehicle Loading Crane – Non High Risk Work Licence » RIIHAN307E operate a vehicle loading crane	1 Day
Vehicle Loading Crane – CV (HRWL) » TLILIC0024 Licence to operate a vehicle loading crane (capacity 10 metre tonnes and above) » RIIHAN307E operate a vehicle loading crane	5 Days
Rigging Basic – RB (HRWL) » CPCCLRG3001 Licence to perform rigging basic level	5 Days
Rigging Intermediate – RI (HRWL) » CPCCLRG3002 Licence to perform rigging Intermediate level	5 Days
Scaffolding Basic – SB (HRWL) » CPCCLSF2001 Licence to erect, alter and dismantle scaffolding basic level	5 Days
Scaffolding Intermediate – SI (HRWL) » CPCCLSF3001 Licence to erect, alter and dismantle intermediate level	5 Days
Scaffolding Advanced – SA (HRWL) » CPCCLSF4001 Licence to erect, alter and dismantle advanced level	5 Days
Slew Crane up to 60 tonnes – C6 (HRWL) » TLILIC0023 Licence to operate a slewing mobile crane (up to 60 tonnes)	5 Days
Slew crane over 100 tonnes – CO (HRWL) » TLILIC0020 Licence to operate a slewing mobile crane (over 100 tonnes)	5 Days
CPC30920 Certificate III in Scaffolding	2 Years

